

AR1000-5000



Numbering System: MODEL - BODY SIZE - PORT SIZE - OPTIONS				
MODEL	BODY SIZE	PORT SIZE	Standard Features	Options
AC	1000	00=10-32 (M5) 01=1/8 NPT 02=1/4 NPT 03=3/8 NPT 04=1/2 NPT 06=3/4 NPT 10=1 NPT	125 PSI Regulating Range Polycarbonate Bowl Semi-Auto Differential Drain F25=25 Micron Filter (Sintered Brass) Relieving Type	D=Automatic Drain (For 2000 TO 5000 Series Filter) M=Aluminum Metal P30=30PSI Regulating Range P60=60 PSI Regulating Range 5 Micron Filter
AW	2000			
	2500			
AR	3000			
	4000			
AF	5000			
AL				
AC	1010			
	2010			
	3010			
	4010			
	5010			

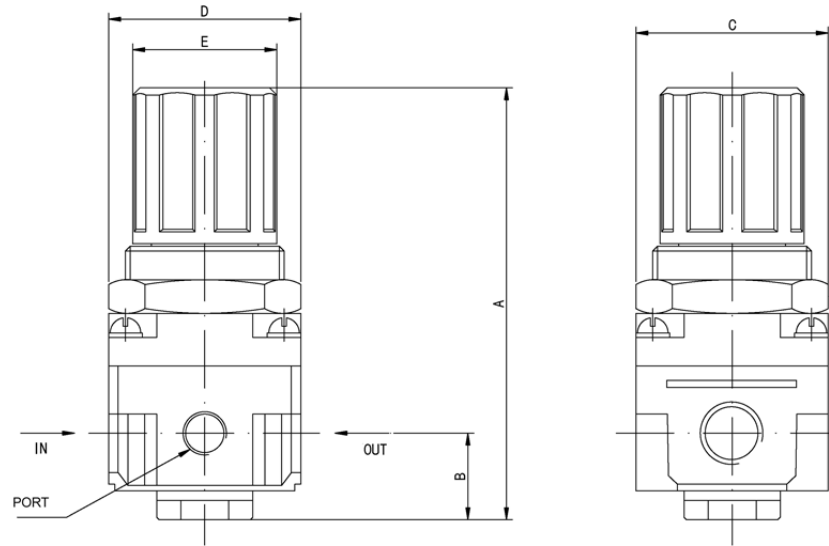
Specifications:**A Series FRL Interchangeable with SMC - NAC SERIES FRL**

These FRL components are of Modular design with joiner clamps and allow you to easily connect and disconnect FRL components for simple installation and maintenance.

Regulator-Filter-Lubricator	AC1000-XX	AC2000-XX	AC3000-XX	AC4000-XX	AC4000-06	AC5000-XX
Flow Rate* SCFM (LPM)	3 (90)	18 (500)	70 (2000)	140 (4000)	160 (4500)	180 (5000)
Stacking Regulator-Filter-Lubricator	AC1010-XX	AC2010-XX	AC3010-XX	AC4010-XX	AC4010-06	AC5010-XX
Flow Rate* SCFM (LPM)	3 (90)	18 (500)	60 (1700)	105 (3000)	105 (3000)	140 (4000)
Stacking Regulator-Filter	AW1000-XX	AW2000-XX	AW3000-XX	AW4000-XX	AW4000-06	AW5000-XX
Flow Rate* SCFM (LPM)	3 (90)	19 (550)	70 (2000)	140 (4000)	160 (4500)	195 (5500)
Regulator	AR1000-XX	AR2000-XX	AR3000-XX	AR4000-XX	AR4000-06	AR5000-XX
Flow Rate* SCFM (LPM)	4 (100)	19 (550)	88 (2500)	210 (6000)	210 (6000)	280 (8000)
Filter	AF1000-XX	AF2000-XX	AF3000-XX	AF4000-XX	AF4000-06	AF5000-XX
Flow Rate* SCFM (LPM)	4 (110)	26 (750)	70 (2000)	140 (4000)	210 (6000)	245 (7000)
Lubricator	AL1000-XX	AL2000-XX	AL3000-XX	AL4000-XX	AL4000-06	AL5000-XX
Flow Rate* SCFM (LPM)	3 (90)	28 (800)	60 (1700)	180 (5000)	220 (6300)	245 (7000)
Port Size	10-32 (M5)	1/8 or 1/4 NPT	1/4 or 3/8 NPT	3/8 or 1/2 NPT	3/4 NPT	3/4 or 1 NPT
Port Size (Pressure Gauge)	1/16 RC (PT)	1/8 NPT	1/8 NPT	1/4 NPT	1/4 NPT	1/4 NPT
Regulating Range	7-100 PSI	7-125 PSI (0.5-8.5 kgf/cm ²)				
Max. Operating Pressure	150 PSI (9.9 kgf/cm ²)					
Operating Temperature	40-140°F (5-60°C)					
Filtration	5 micron filter (standard); 25 Micron (Sintered Brass Filter)					
Bowl Material	Polycarbonate (standard) or Aluminum Metal					
Bowl Guard	N/A		Steel Bowl Guard			
Body Material	Die-Casting Aluminum					
Construction/Regulator	Relieving Type					
Filter Drain	Semi-Auto Differential Drain			Semi-Auto Differential Drain (Standard) or Automatic Drain		

*Measured with Supply Pressure @100 PSI and Set Point Pressure @75 PSI

Regulator Dimensions

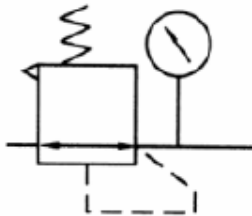


Model	Flow Rate (lpm/scfm)	Port	Gauge Port	A (mm/in)	B (mm/in)	C (mm/in)	D (mm/in)	E (mm/in)	Panel Hole Size (mm/in)	Bracket	Weight (kg/lb)	Gauge
AR1000-00	100/4	10-32 (M5)	1/16 Rc	61.5	11	25	25	20	20	B120	0.08	GE-1-160
				2.42	0.43	0.98	0.98	0.79	0.79		0.18	
AR2000-01	550/19	1/8 NPT	1/8 NPT	95	17	40	40	34	34	B220	0.27	GE-1 1/2-160
AR2000-02		1/4 NPT		3.74	0.67	1.57	1.57	1.34	1.34		0.59	
AR2500-02	2000/70	1/4 NPT	1/8 NPT	102.5	25	48	48	34	34		0.27	
AR2500-03		3/8 NPT		4.04	0.99	1.89	1.89	1.34	1.34		0.59	
AR3000-02	2500/88	1/4 NPT	1/8 NPT	127.5	35	53	53	40	40	B320	0.41	GE-2-160
AR3000-03		3/8 NPT		5.02	1.38	2.09	2.09	1.57	1.57		0.90	
AR4000-03	6000/210	3/8 NPT	1/4 NPT	149.5	37.5	70	70	54	54	B420	0.84	
AR4000-04		1/2 NPT		5.89	1.48	2.76	2.76	2.13	2.13		1.85	
AR4000-06	6000/210	3/4 NPT	1/4 NPT	154	40.5	70	75	54	54		0.84	
					6.06	1.59	2.76	2.95	2.13		2.13	1.85
AR5000-06	8000/280	3/4 NPT	1/4 NPT	168	48	90	90	54	54	B420	1.19	GE-2-160
AR5000-10		1 NPT		6.61	1.89	3.54	3.54	2.13	2.13		2.62	

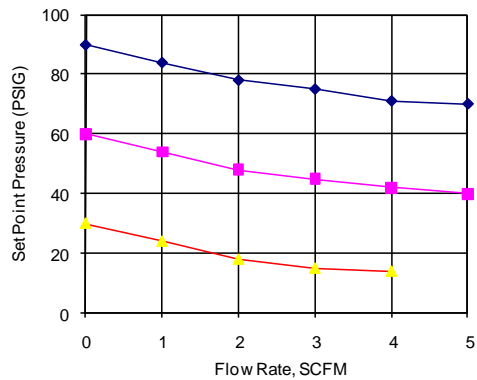


Regulator Selection:

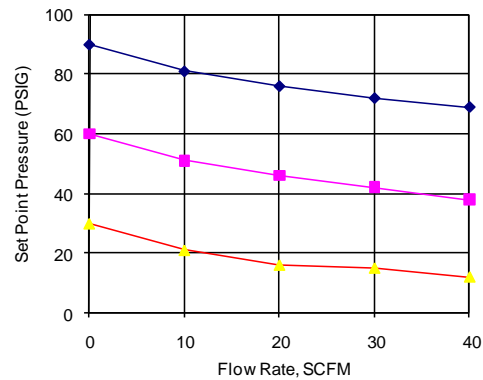
1. Determine flow rate requirements.
2. Determine required set point pressure and allowable pressure drop.
3. Locate the FRL graph with set point pressure that provides the flow rate with acceptable pressure drop.



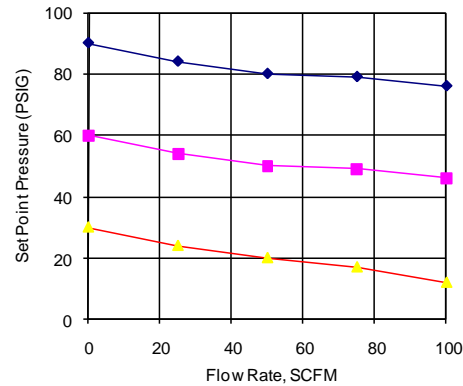
AR1000 Series Pressure Regulator
Flow Rate VS Set Point Pressure
Supply Pressure 100 PSI



AR2000 Series Pressure Regulator
Flow Rate VS Set Point Pressure
Supply Pressure 100 PSI



AR3000 Series Pressure Regulator
Flow Rate VS Set Point Pressure
Supply Pressure 100 PSI



AR4000 Series Pressure Regulator
Flow Rate VS Set Point Pressure
Supply Pressure 100 PSI

